

## GENERAL TECHNICAL DATA

### dimensions:

- height: 72 cm
- width: 128 cm
- depth: 64 cm

**weight:** - using softwood 79 kg  
- using hardwood 84 kg

**materials:** - stainless or carbon steel  
- hardwood or softwood

## DESCRIPTION

Welded structure combined with wooden planks. Welded 3 mm thick steel sheet structure made of carbon steel s235Jr, galvanised and powder coated in accordance with RAL palette, or entirely of stainless steel 1.4301 ground. Bench seat using 14 wooden planks with a rectangular cross-section of 38 x 80 mm and varying in length from 405 mm to 624 mm. Softwood impregnated and varnished twice or hardwood impregnated and oiled twice.

All street furniture elements must be properly anchored according to the manufacturer's technical instructions. The manufacturer is not liable for damage caused by negligent use or failure to follow instructions.



ZANO  
SINCE 1998

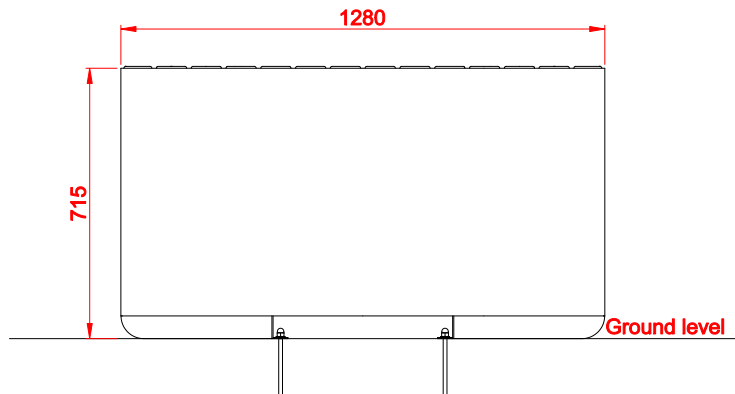


*Filip Babiarz*

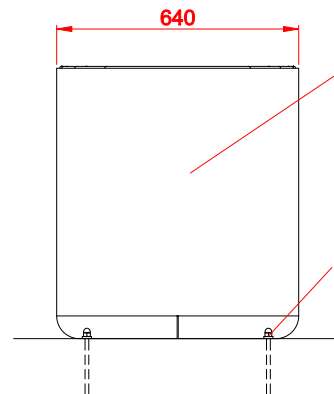
product:  
bench UNIVERSE 02.455.4  
version: 1  
designer: Filip Babiarz

In accordance with the Polish Law on Copyright and Related Rights of 04.02.1994 (Official Journal of Laws No. 24, item 83, corrected: Journal of Laws No. 43, item 170) and in accordance with the EU copyright legislation including all EU directives and regulations on copyright, Zano Mirosław Zarotyński Company, reserves the copyright of drawings, descriptions, 3D models, renderings, graphics, content contained in offers, attachments to offers and all other documents. Its content is the intellectual property of ZANO Mirosław Zarotyński company. The use of author's ideas, solutions, copying, distribution of photos, graphics or fragments of graphics, descriptive texts, for profit, without the permission of the author - ZANO Mirosław Zarotyński company - is prohibited and constitutes a copyright infringement and is punishable.

FRONT VIEW



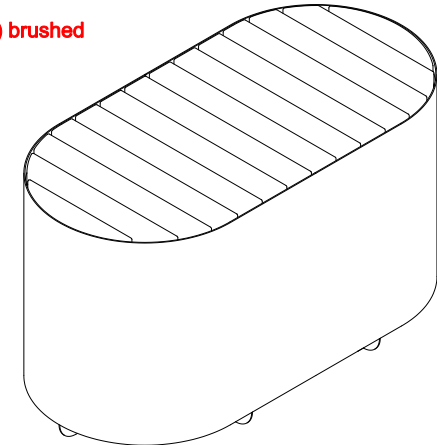
SIDE VIEW



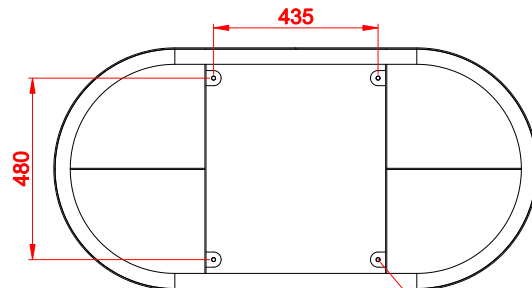
Steel types:  
 - Construction steel (S235JR, DC01)  
 galvanized and powder coated  
 according to RAL palette  
 - Stainless steel (1.4301) brushed

Installation:  
 - Attached by  
 bolts to foundation

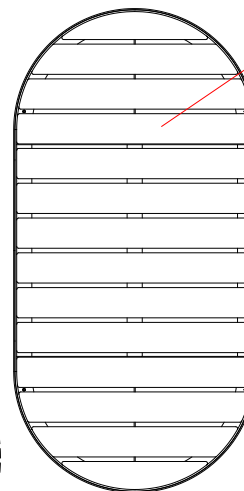
ISOMETRIC VIEW



MOUNTING HOLES SPACING



TOP VIEW

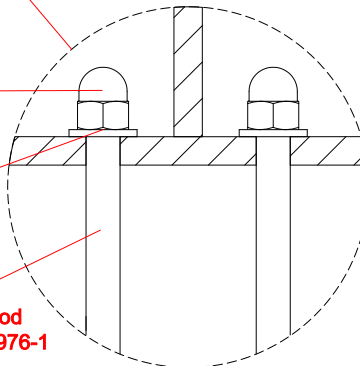


Wood types:  
 - Soft wood, lacquered  
 - Hard wood, oiled

4x Nut M10 DIN1587

4x Washer M10 DIN125

4x Threaded rod  
 M10x150 DIN976-1



Dimensions given in [mm]

## Universe bench 02.455.4

In accordance with the Polish Law on Copyright and Related Rights of 04.02.1994 (Official Journal of Laws No. 24, item 83, corrected: Journal of Laws No. 43, item 170) and in accordance with the EU copyright legislation including all EU directives and regulations on copyright, ZANO Miroslaw Zarotynski Company, reserves the copyright of drawings, descriptions, 3D models, renderings, graphics, content contained in offers, attachments to offers and all other documents. Its content is the intellectual property of ZANO Miroslaw Zarotynski company. The use of author's ideas, solutions, copying, distribution of photos, graphics or fragments of graphics, descriptive texts, for profit, without the permission of the author - ZANO Miroslaw Zarotynski company - is prohibited and constitutes a copyright infringement and is punishable.



ZANO Street Furniture  
 Lindego 7A, 30-148  
 Cracow, Poland  
 phone: +48 12 200 20 53  
 email: office@zano.pl

Number: 170920-v1

Sheet: A4

Scale: 1:20

Mass:	with soft wood	79 kg
	with hard wood	84 kg