

GENERAL TECHNICAL DATA

dimensions:

- height: 46 cm
- width: 50 cm
- depth: 54 cm

- weight:**
- with softwood 31 kg
 - with hardwood 38 kg

- materials:**
- carbon or stainless steel
 - softwood or hardwood

DESCRIPTION

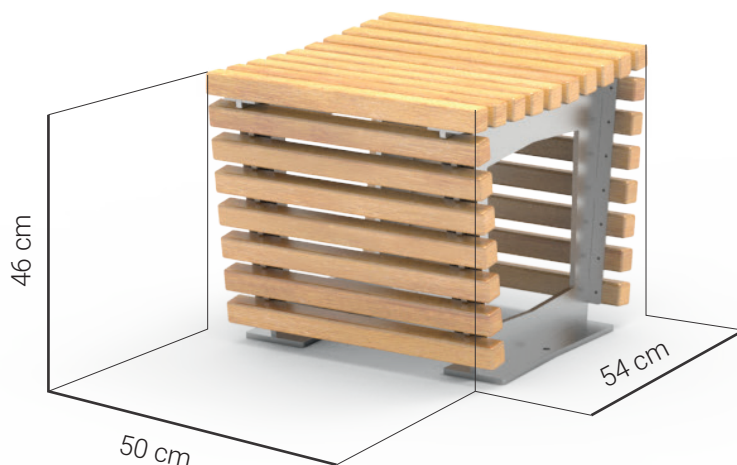
Welded construction combined with wooden planks. Welded construction of steel sheets, 10 and 4 mm thick, made of carbon steel s235Jr galvanised and powder coated in accordance with RAL palette, or entirely of stainless steel 1.4301 polished. The seat and back of the bench are made of wooden planks with a rectangular cross-section measuring 38 x 38 mm. The bench has 24 planks with a length of 500 mm. Softwood impregnated and varnished twice or hardwood impregnated and oiled twice.

All items of street furniture must be properly anchored according to the manufacturer's technical instructions. The manufacturer is not liable for damage caused by negligent use or failure to follow instructions.

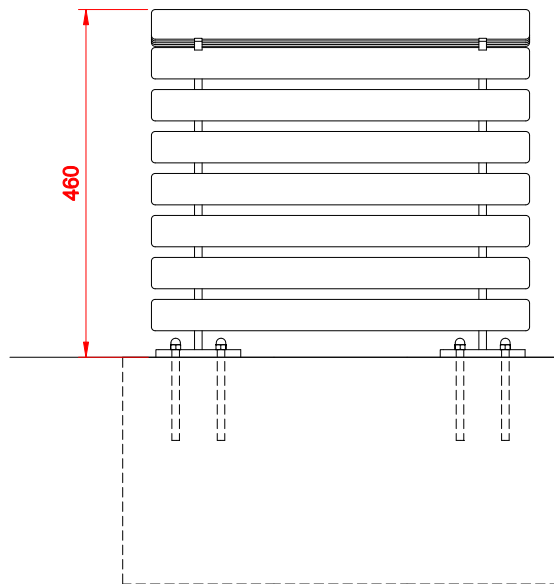


product: FLASH seat 02.825.1
version: 1

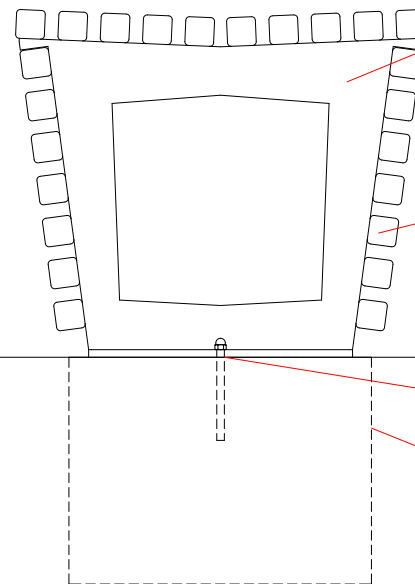
In accordance with the Polish Law on Copyright and Related Rights of 04.02.1994 (Official Journal of Laws No. 24, item 83, corrected: Journal of Laws No. 43, item 170) and in accordance with the EU copyright legislation including all EU directives and regulations on copyright, Zano Miroslaw Zarotyński Company, reserves the copyright of drawings, descriptions, 3D models, renderings, graphics, content contained in offers, attachments to offers and all other documents. Its content is the intellectual property of ZANO Miroslaw Zarotyński company. The use of author's ideas, solutions, copying, distribution of photos, graphics or fragments of graphics, descriptive texts, for profit, without the permission of the author - ZANO Miroslaw Zarotyński company - is prohibited and constitutes a copyright infringement and is punishable.



FRONT VIEW



SIDE VIEW



Steel types:
 - Construction steel (S235JR, DC01)
 galvanized and powder coated
 according to RAL palette
 - Stainless steel (1.4301) brushed

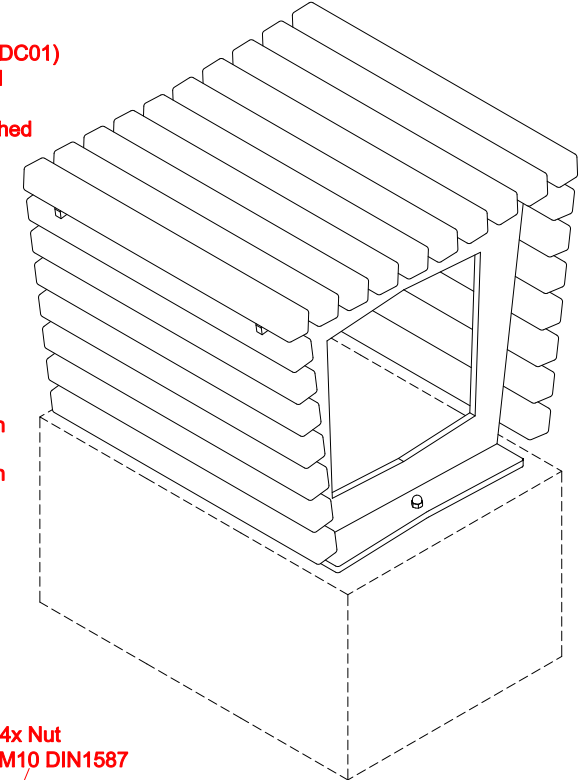
Wood types:
 - Softwood, lacquered
 - Hardwood, oiled

Ground level

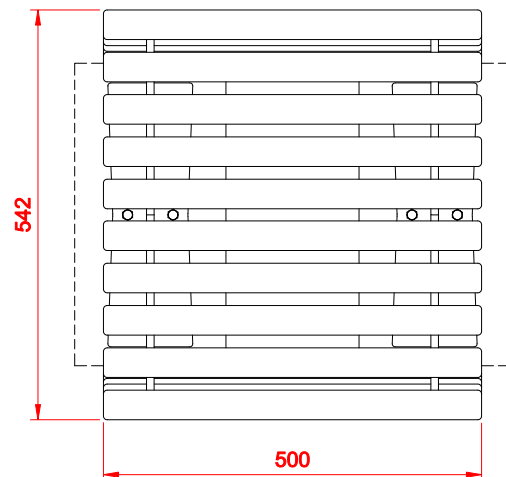
Installation:
 Attached by bolts to foundation

Exemplary concrete foundation

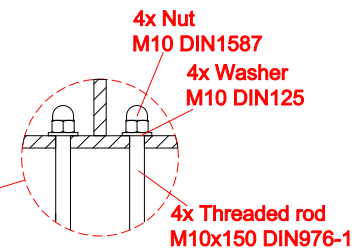
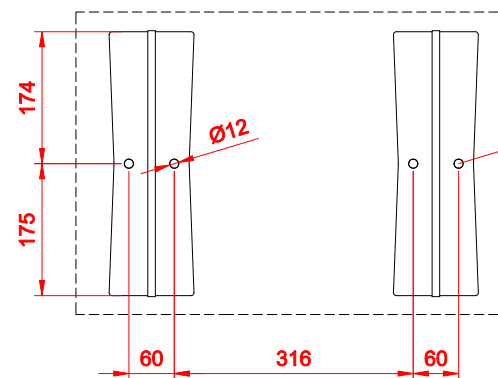
ISOMETRIC VIEW



TOP VIEW



MOUNTING HOLES SPACING



Dimensions given in [mm]

Flash Seat 02.825.1

In accordance with the Polish Law on Copyright and Related Rights of 04.02.1994 (Official Journal of Laws No. 24, Item 83, corrected: Journal of Laws No. 43, Item 170) and in accordance with the EU copyright legislation including all EU directives and regulations on copyright, Zano Mirosław Zarotyński Company, reserves the copyright of drawings, descriptions, 3D models, renderings, graphics, content contained in offers, attachments to offers and all other documents. Its content is the intellectual property of ZANO Mirosław Zarotyński company. The use of author's ideas, solutions, copying, distribution of photos, graphics or fragments of graphics, descriptive texts, for profit, without the permission of the author - ZANO Mirosław Zarotyński company - is prohibited and constitutes a copyright infringement and is punishable.



ZANO Street Furniture
 Lindego 7A, 30-148
 Cracow, Poland
 phone: +48 12 200 20 53
 email: office@zano.pl

Number:	280918-v1	
Sheet:	A4	
Scale:	1:10	
Mass:	with soft wood	31 kg
	with hard wood	38 kg